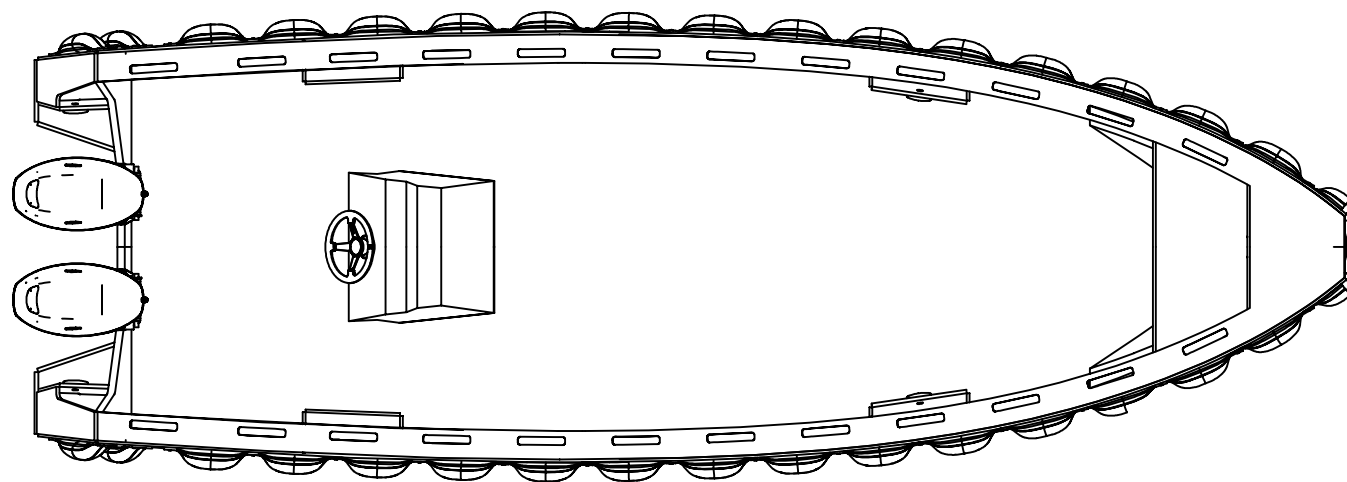
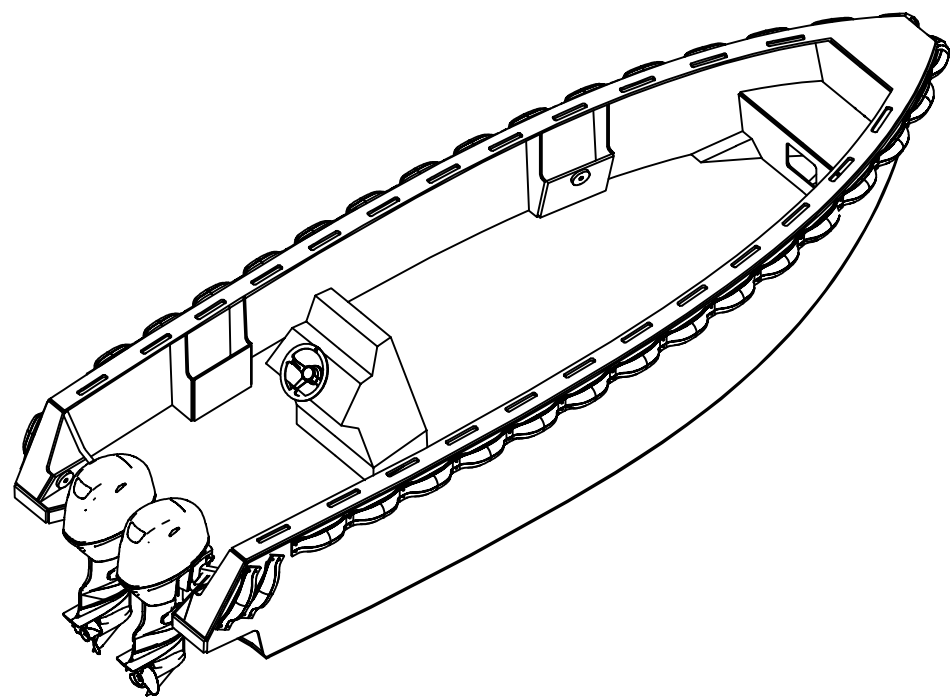


CWL400  
(average draught)  
BASE



Main particulars

Length hull (moulded) 6.95 [m]  
 Breadth hull 2.28 [m]  
 Depth at 1/2L 1.32 [m]  
 Building material (hull) HDPE 15 & 20 [mm]

Propulsion Single Outboard max 150 [HP]  
 Twin Outboard max 2 x 70 [HP]

<b>TIDEMAN BOATS</b>	Nieuwendammerkade 28C3 1022 AB Amsterdam The Netherlands		www.tidemanboats.com bruno@tidemanboats.com +31 6 292 005 17		
	DRAWN	TIDEMAN BOATS	FORMAT	A3	PROJECTION 
	CHECKED	B.A. de Vries	SCALE	1:40	
	APPROVED	B. Tideman	DATE	30-03-2017	
HDPE RBB650 OB-20B - PRELIMINARY GENERAL ARRANGEMENT					
TYPE		YARD NO contractor	DWG NO	REV	REVISION
		YARD NO building yard			-