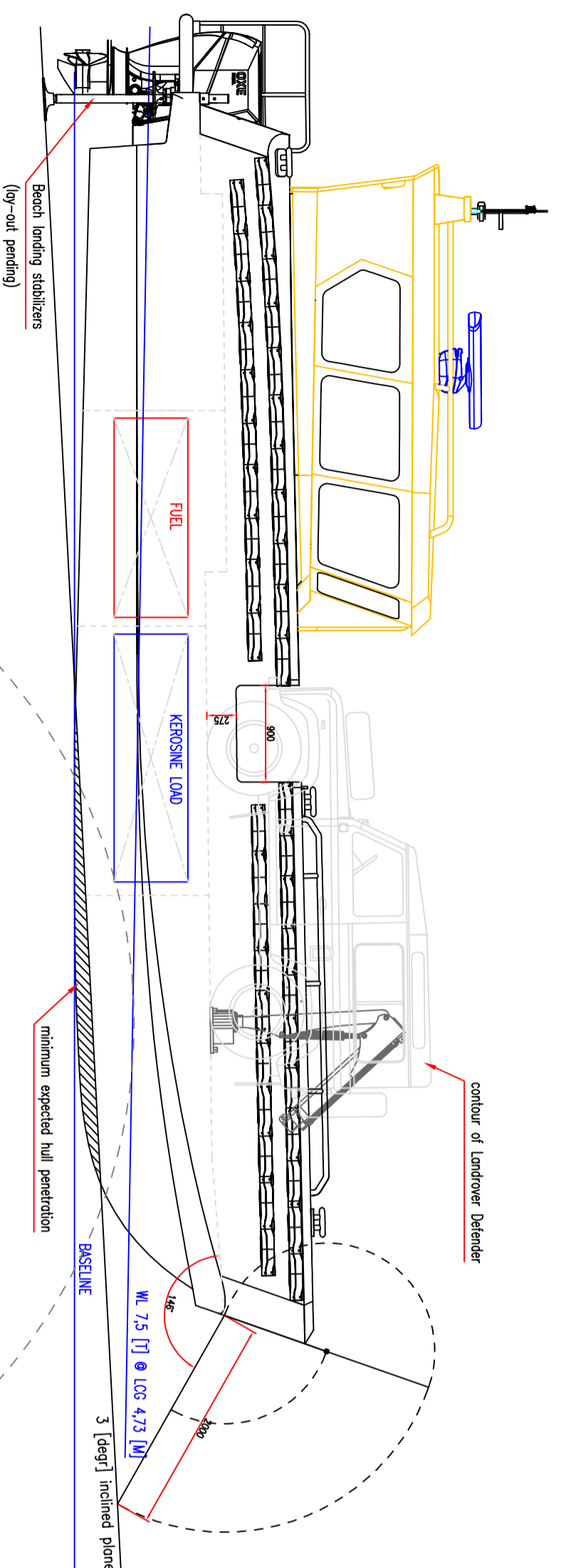
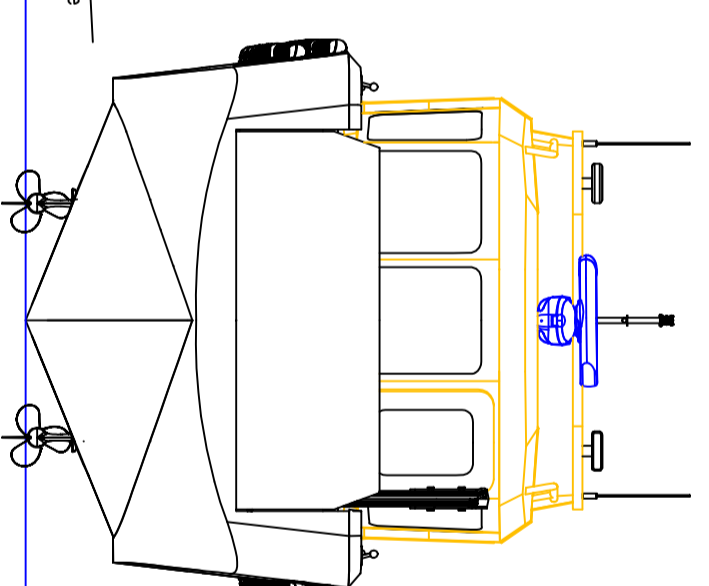


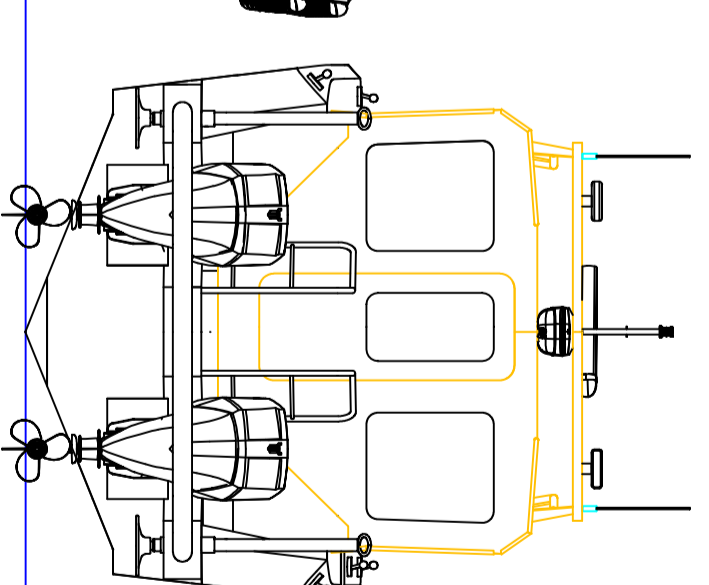
STARBOARD VIEW



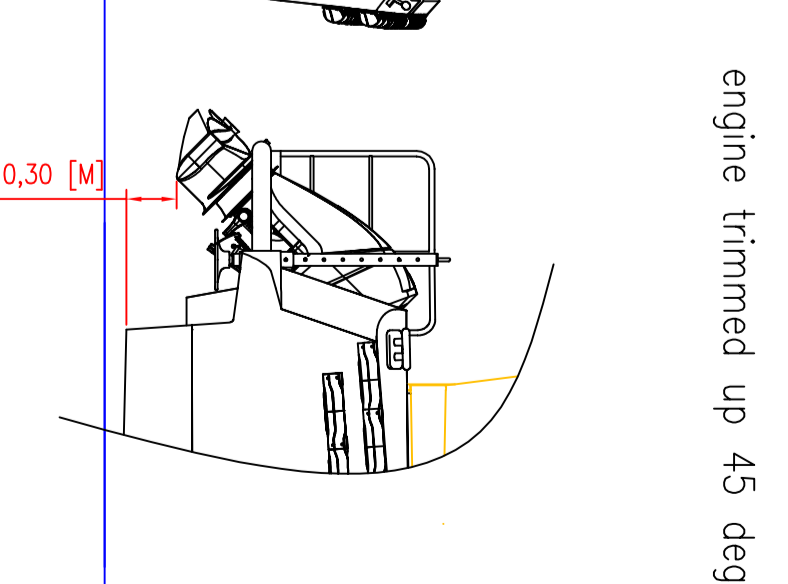
FRONT VIEW



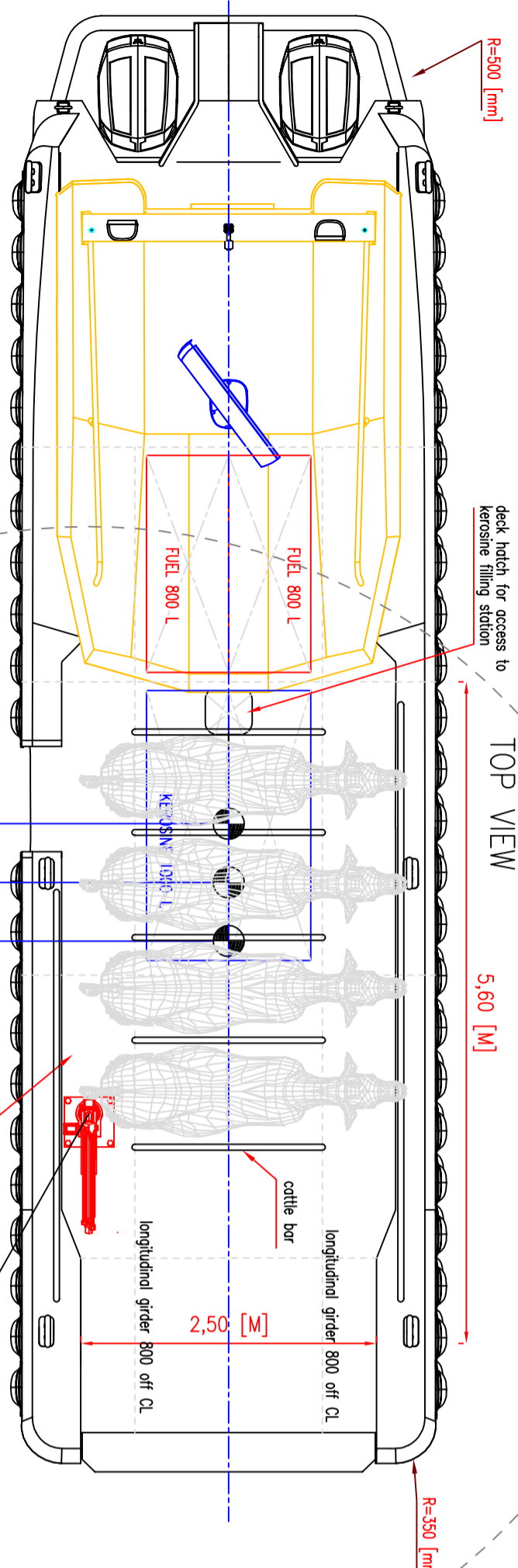
AFT VIEW



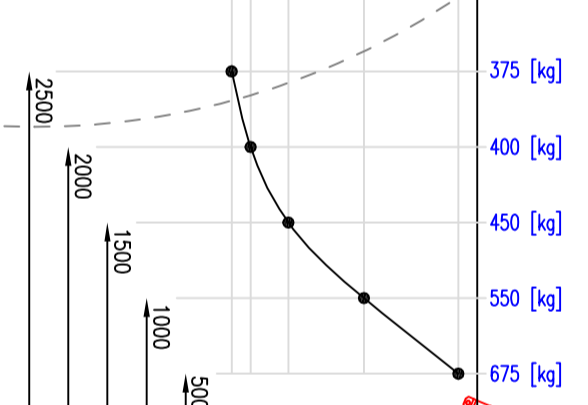
SIDE VIEW



TOP VIEW

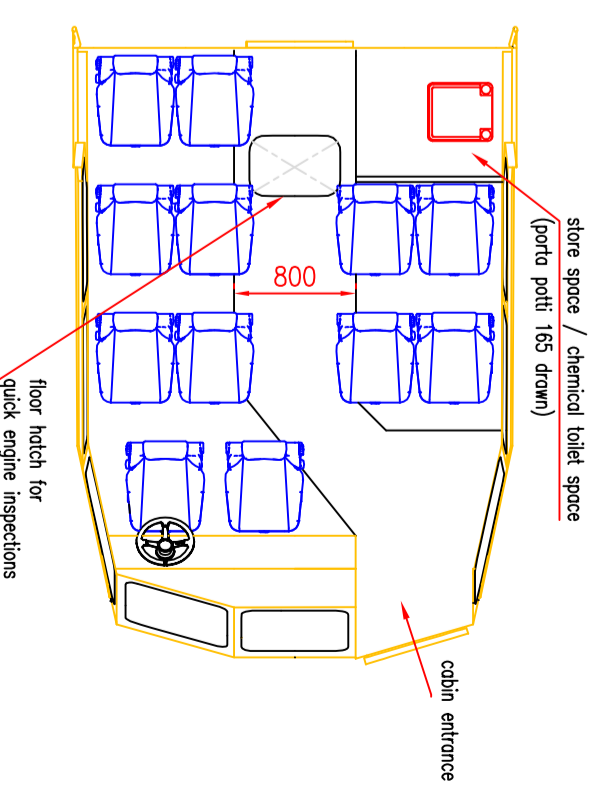


TRANSVERSE CRANE CAPACITIES

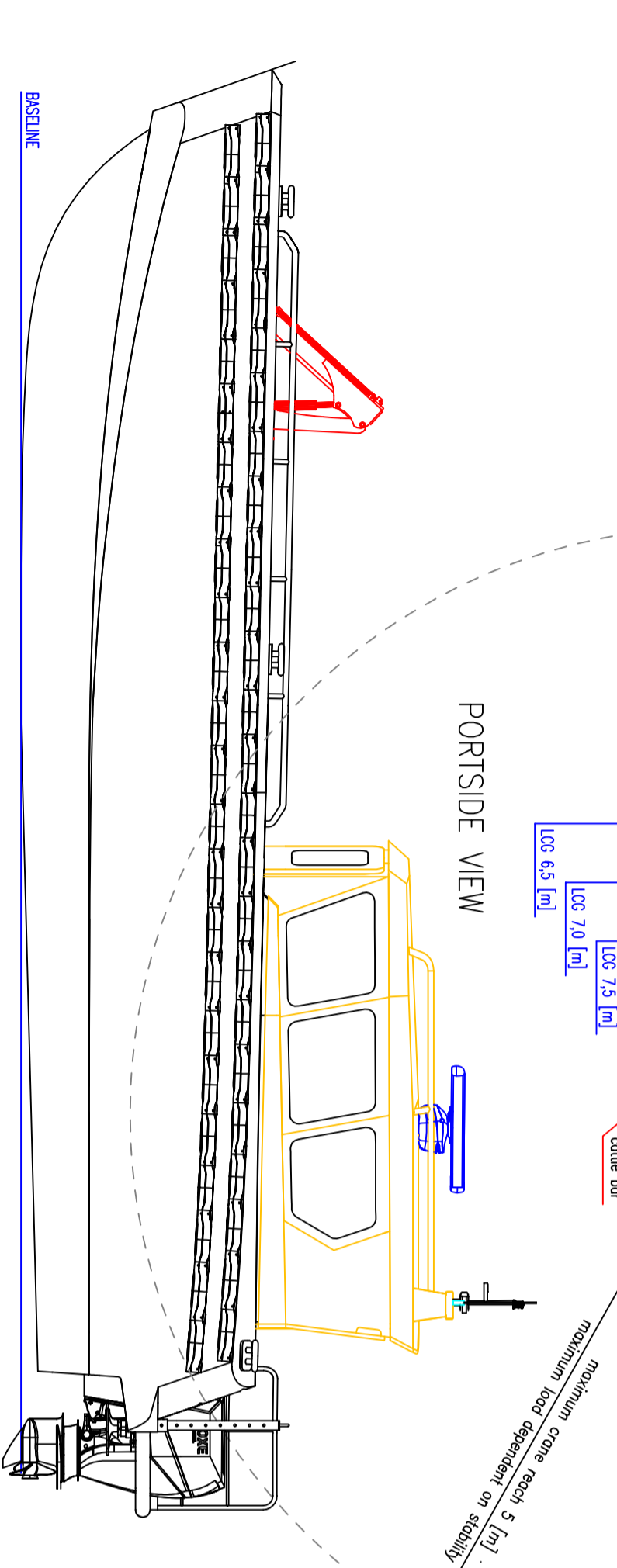


Crane capacities are given for light sailing conditions and load of a VCG of 3.5 [m] above baseline. Maximum load value as given relates to a heel angle of approx. 10 [degrees]. Values are approximate and preliminary. Load values will decrease with increasing VCG.

CABIN LAY-OUT



PORTSIDE VIEW



Main particulars

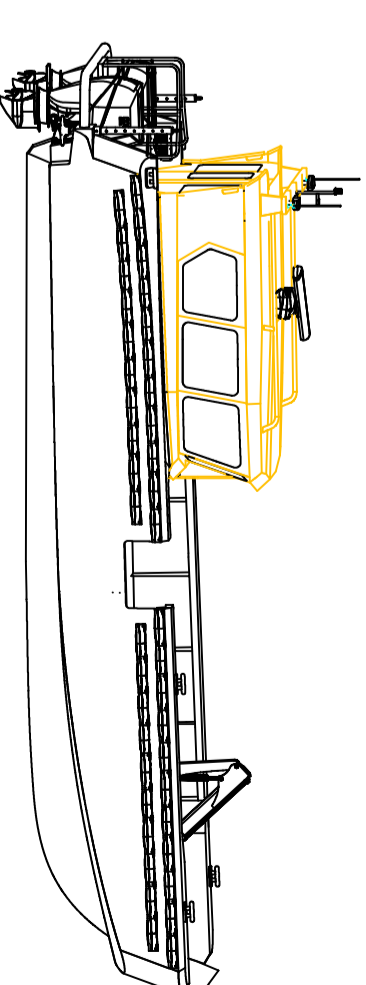
- Length hull (moulded) 11,95 [m]
- Breadth hull (moulded) 3,50 [m]
- Depth (at bow) 2,22 [m]
- Building material Aluminium (hull) HDPE 15, 20, & 25 [mm] (wheelhouse) EN-AW 5083, 4 [mm]
- Population 2 x OXE diesel outboard engine, 2 x 200 [HP]
- Deck crane Pollfinger PC3800 (or equivalent)
- Light "arrow" displacement 7,5 [t]
- Deadrise aftship 21 [degr]
- Bow ramp width approx. 2,40 [m]

Loading capacities

- Fuel capacity 2 x 800 [L]
- Person capacity 2 crew + 10 passengers [-]
- Kerosine tank load capacity (bmd) 2 x 1000 [L]
- Deck load capacity (approx. *) 6 [tons] @ LCG 6,5 [m]
- 4 [tons] @ LCG 7,0 [m]
- 2,5 [tons] @ LCG 7,5 [m]

*) Max. deck load values are based only on evidence of low-drum lift. In case of higher VCG's of deck load, stability could become critical.

CONCEPT DESIGN – FOR INFORMATION ONLY



		Nieuwendijkdijk 28C3 1022 AB Amsterdam The Netherlands www.tidemansboats.com info@tidemansboats.com +31 6 292 005 17	
BOUW	TIDEMAN BOATS	FORM	A2
ONTWERP	B. de Vries	SCALE	1:30
APPROVED	B. Tideman	DATE	12-09-2019
TYPE HDPE LANDING CRAFT WITH DIESEL WATERJET PROPULSION		OVER NO	DECKPLAN A
LCI200 2MW Lombay Island – PRELIMINARY GENERAL ARRANGEMENT			